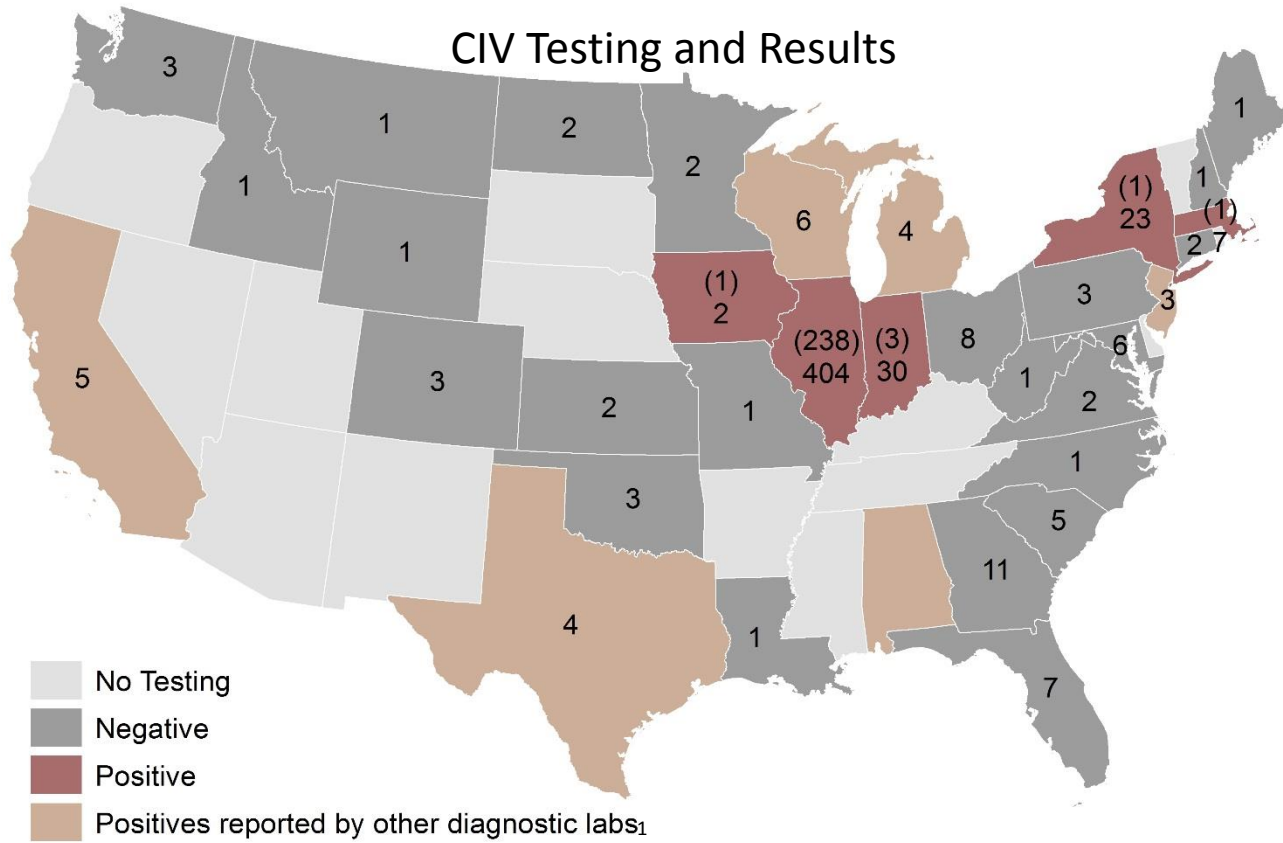


Emerging Disease Monitoring: Canine Influenza Virus

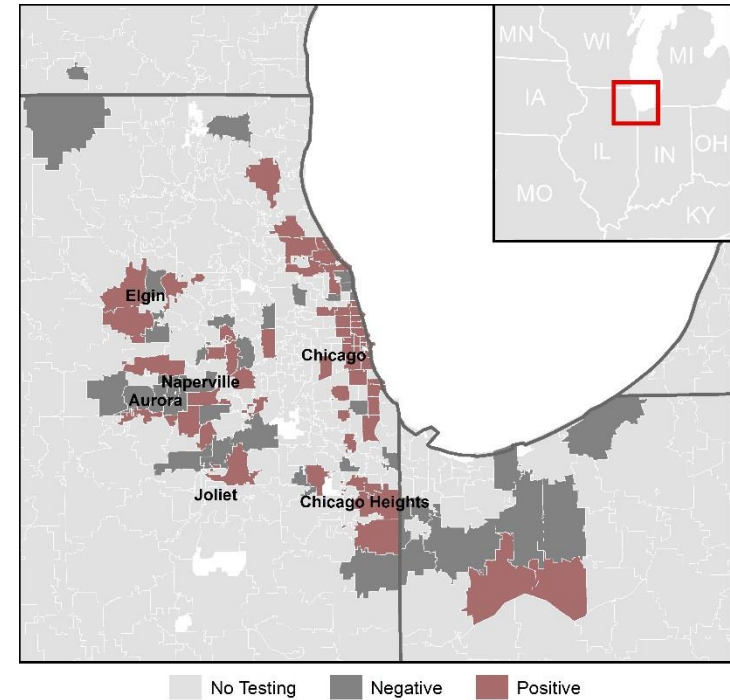
Testing Summary March 13 – May 6, 2015



Labels indicate number of tests performed by the AHDC
Number of positive results given in parentheses

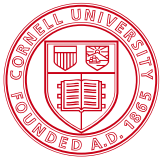
States (+/Total): California (0/5), Colorado (0/3), Connecticut (0/2), Florida (0/7), Georgia (0/11), Idaho (0/1), Illinois (238/404), Indiana (27/30), Iowa (1/2), Kansas (0/2), Louisiana (0/1), Maine (0/1), Maryland (0/6), Massachusetts (1/7), Michigan (0/4), Minnesota (0/2), Missouri (0/1), Montana (0/1), New Hampshire (0/1), New Jersey (0/3), New York (1/23), North Carolina (0/1), North Dakota (0/2), Ohio (0/8), Oklahoma (0/3), Pennsylvania (0/3), South Carolina (0/5), Texas (0/4), Virginia (0/2), Washington (0/3), West Virginia (0/1), Wisconsin (0/6), Wyoming (0/1), Unknown (2/45)

Chicago Area Testing



Legend: No Testing (light gray), Negative (dark gray), Positive (dark red)

¹ unconfirmed report in [Iindex Press Release](#) (5/7/15)



Emerging Disease Monitoring: Canine Influenza Virus Testing Summary March 13 – May 6, 2015

